

2016 ISAF Sailing World Cup

Sailing World Cup Hyères Round SAILING INSTRUCTIONS (RSI) Addendum

RSI 9 [DP] [NP] IDENTIFICATION AND ADVERTISING

RSI 9.1 Boats are required to display the following advertising that will be provided by the OA and shall be fixed in accordance with the instructions posted on the Official Notice Board:

(a) SWC TPM Blue sticker

RSI 10 [DP] [NP] SAFETY REGULATIONS

RSI 10.1 Emergency Communications

Course Area	Time
Radio Channel	71
Emergency services phone	112
Organizing Authority phone	+33 4 94 01 48 90

RSI 11 COMMUNICATIONS WITH COMPETITORS

RSI 11.1 In addition to <http://www.sailing.org/worldcup/onb.php>, notices to competitors will also be posted on the official notice board located in the main tent close to the race office.

RSI 11.2 Signals ashore will be displayed at the pier, eastern of Laser and 470 parking.

RSI 11.3 There will be a daily morning meeting with team leaders at 8:30 in the Espace Nautique Hyérois.

RSI 11.4 When flag AP is displayed ashore, '1 minute' in RRS Race Signals AP is replaced with the time shown below:

Area	Time
Alpha and Echo	30 minutes
Bravo, Charlie and Delta	45 minutes

RSI 15 COURSE AREAS and MARKS

RSI 15.1 Course Areas are shown in Addendum RSI 1.

RSI 15.2 Marks 1, 2, 3, and 4, or associated gate marks, will be as follows:

Area	Marks 1, 2, 3, 4	New Mark
Alpha	White cylinder	Orange cylinder
Bravo	Orange cylinder	Black cylinder
Charlie	Green cylinder	White cylinder
Delta	Black cylinder	Yellow cylinder
Echo	Yellow cylinder	Orange cylinder

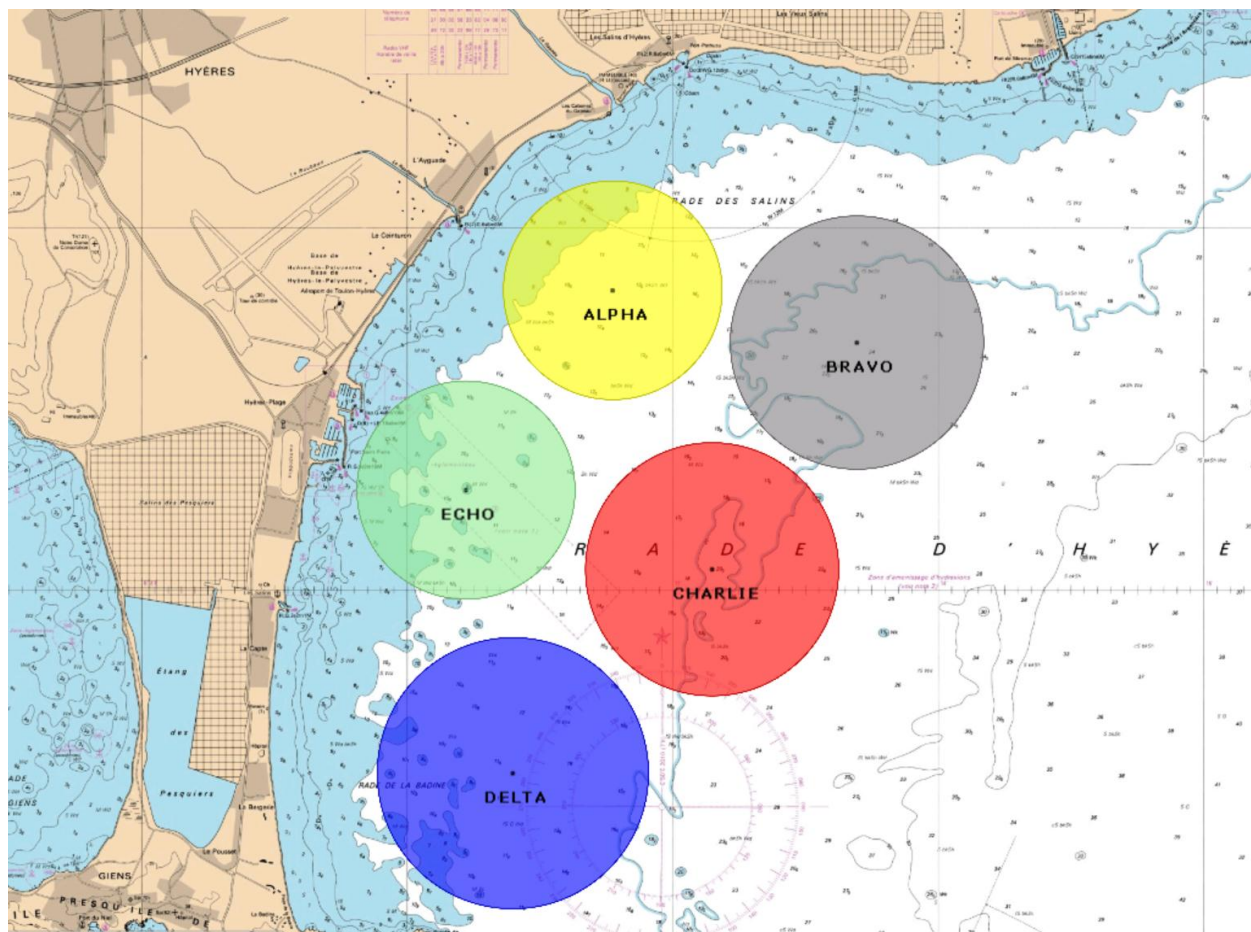
- RSI 13.4 Offset marks will be the same (colour and shape) as Marks 1
- RSI 13.5 Marks S1, S2, and S3 will be Orange cylinder.
- RSI 13.6 The starting and finishing line marks will be race committee vessels or inflatable marks.
- RSI 13.7 Inflatable starting line marks, when used, will be green cylinder. Inflatable finishing line marks, when used, will be white cylinder.

RSI 20 PROTESTS, PENALTIES and REQUESTS for REDRESS

- RSI 20.1 The protest time limit is either the number of minutes after the last boat has finished the last race of the day or "AP over A" or "N over A" is displayed for an event/fleet as shown below:

Area	Protest Time
Alpha and Echo	45 minutes
Bravo, Charlie and Delta	60 minutes

RSI ADDENDUM 1 CHART OF COURSE AREAS



Area	Area Centre	Area Diameter	VHF Channel
Alpha	43° 05, 650' N 006° 11,540 E	1.20 nm	67
Bravo	43° 05, 360' N 006° 13,390 E	1.40 nm	08
Charlie	43° 04, 100' N 006° 12,290 E	1.40 nm	72
Delta	43° 02, 970' N 006° 10,790 E	1.50 nm	06
Echo	43° 04, 540' N 006° 10,440 E	1.20 nm	77

RSI ADDENDUM 2 VENUE MAP

